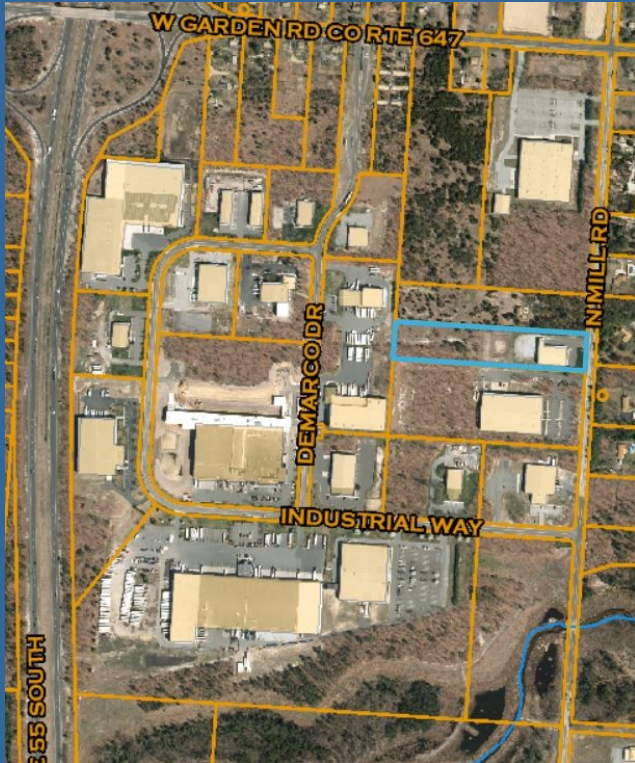


1996 N. Mill Road

VINELAND, NJ
(Block 1005, Lot 7)

Vineland Industrial Park South

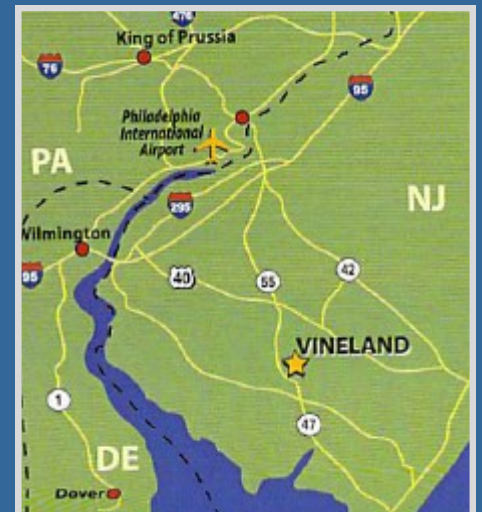
Located in the Vineland Urban Enterprise Zone



PROPERTY INFORMATION:

LOT SIZE:

- Built in 2010
- 3 Offices
- 2 Bathrooms
- +/- 5 Acres
- 16,000 square feet
- 20' high ceiling warehouse
- Heat and central air



For more information, contact:
David Surdam
T 856.696.0014 Ext. 2839
dave@cglifesciences.com

City of Vineland
640 E. Wood Street
Vineland, NJ 08360